

REMOTE CONTROLLER

OWNER'S MANUAL

IMPORTANT NOTE:

Thank you for purchasing our air conditioner. Please read this manual carefully before operating your new air conditioning unit. Make sure to save this manual for future reference.

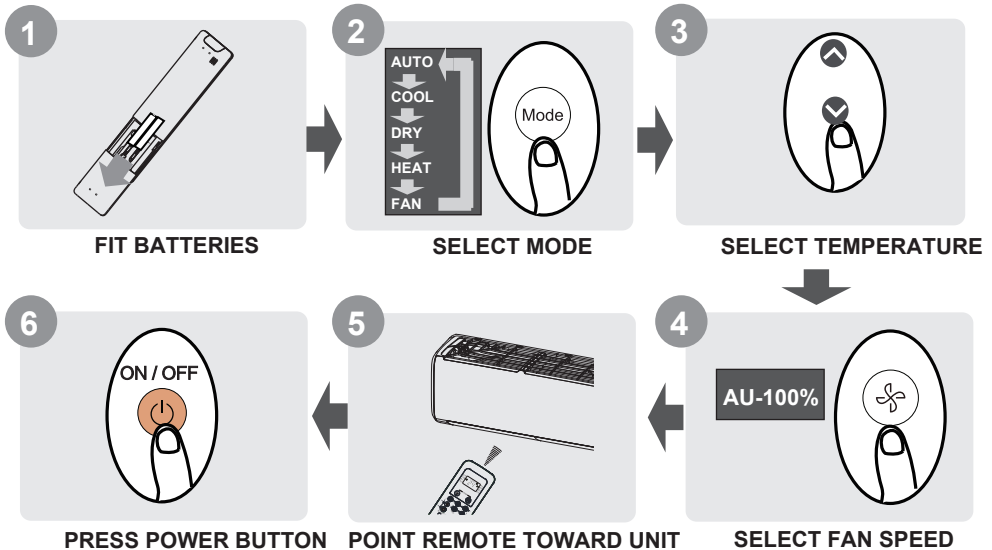
Table of Contents

Remote Controller Specifications	02
Handling the Remote Controller	03
Buttons and Functions	04
Remote Screen Indicators	06
How to Use Basic Functions	07
How to Use Advanced Functions	10

Remote Controller Specifications

Model	RG10L(G2HS)/BGEF, RG10L(G2HS)/BGEFU1, RG10L1(G2HS)/BGEF, RG10L1(G2HS)/BGEFU1, RG10L10(G2HS)/BGEF, RG10P(G2HS)/BGEF, RG10P(G2HS)/BGEFU1, RG10P1(G2HS)/BGEF, RG10L(D2HS)/BGEF, RG10L(D2HS)/BGEFU1, RG10L1(D2HS)/BGEF, RG10L1(D2HS)/BGEFU1, RG10P1(G2HS)/BGEFU1, RG10L10(D2HS)/BGEF
Rated Voltage	3.0V(Dry batteries R03/LR03×2)
Signal Receiving Range	8m
Environment	-5°C~60°C(23°F~140°F)

Quick Start Guide



NOT SURE WHAT A FUNCTION DOES?

Refer to the **How to Use Basic Functions** and **How to Use Advanced Functions** sections of this manual for a detailed description of how to use your air conditioner.

SPECIAL NOTE

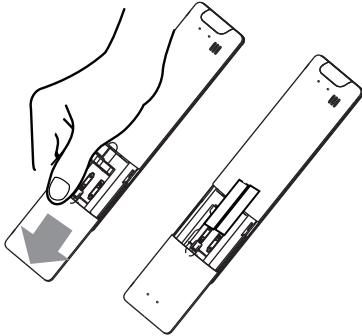
- Button designs on your unit may differ slightly from the example shown.
- If the indoor unit does not have a particular function, pressing that function's button on the remote control will have no effect.
- When there are wide differences between "Remote controller Manual" and "USER'S MANUAL" on function description, the description of "USER'S MANUAL" shall prevail.

Handling the Remote Controller

Inserting and Replacing Batteries

Your air conditioning unit may come with two batteries(some units). Put the batteries in the remote control before use.

1. Slide the back cover from the remote control downward, exposing the battery compartment.
2. Insert the batteries, paying attention to match up the (+) and (-) ends of the batteries with the symbols inside the battery compartment.
3. Slide the battery cover back into place.



! BATTERY NOTES

For optimum product performance:

- Do not mix old and new batteries, or batteries of different types.
- Do not leave batteries in the remote control if you don't plan on using the device for more than 2 months.



BATTERY DISPOSAL

Do not dispose of batteries as unsorted municipal waste. Refer to local laws for proper disposal of batteries.

TIPS FOR USING REMOTE CONTROL

- The remote control must be used within 8 meters of the unit.
- The unit will beep when remote signal is received.
- Curtains, other materials and direct sunlight can interfere with the infrared signal receiver.
- Remove batteries if the remote will not be used more than 2 months.

NOTES FOR USING REMOTE CONTROL

The device could comply with the local national regulations.

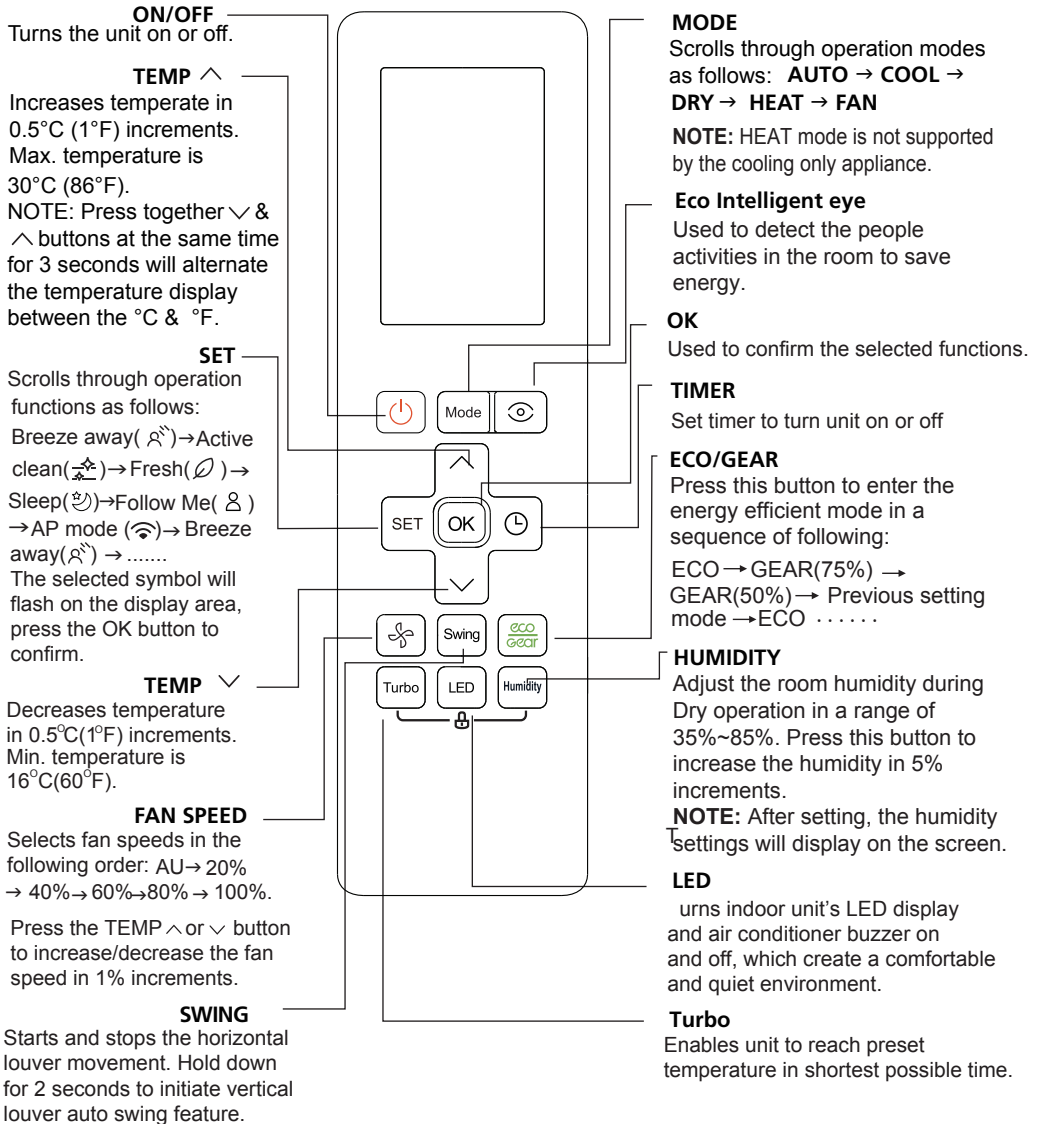
- In Canada, it should comply with CAN ICES-3(B)/NMB-3(B).
- In USA, this device complies with part 15 of the FCC Rules. Operation is subject to the following two conditions:
 - (1) This device may not cause harmful interference, and
 - (2) this device must accept any interference received, including interference that may cause undesired operation.

This equipment has been tested and found to comply with the limits for a Class B digital device, pursuant to part 15 of the FCC Rules. These limits are designed to provide reasonable protection against harmful interference in a residential installation. This equipment generates, uses and can radiate radio frequency energy and, if not installed and used in accordance with the instructions, may cause harmful interference to radio communications. However, there is no guarantee that interference will not occur in a particular installation. If this equipment does cause harmful interference to radio or television reception, which can be determined by turning the equipment off and on, the user is encouraged to try to correct the interference by one or more of the following measures:

- Reorient or relocate the receiving antenna.
- Increase the separation between the equipment and receiver.
- Connect the equipment into an outlet on a circuit different from that to which the receiver is connected.
- Consult the dealer or an experienced radio/TV technician for help.
- Changes or modifications not approved by the party responsible for compliance could void user's authority to operate the equipment.

Buttons and Functions

Before you begin using your new air conditioner, make sure to familiarize yourself with its remote control. The following is a brief introduction to the remote control itself. For instructions on how to operate your air conditioner, refer to the **How to Use Basic Functions** section of this manual.



Model: RG10L(G2HS)/BGEF and RG10L(G2HS)/BGEFU1(Fresh feature is not available)
RG10L1(G2HS)/BGEF, RG10L1(G2HS)/BGEFU1
RG10L10(G2HS)/BGEF(20-28°C/68-82°F)

ON/OFF
Turns the unit on or off.

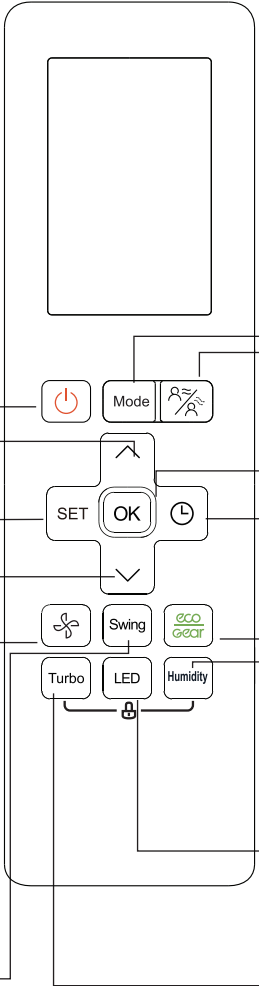
TEMP ^
Increases temperature in 0.5°C (1°F) increments. Max. temperature is 30°C (86°F).
NOTE: Press together ∨ & ^ buttons at the same time for 3 seconds will alternate the temperature display between the °C & °F.

SET
Scrolls through operation functions as follows:
Self clean (🌀) → Fresh (🍃) → Sleep (🌙) → Follow Me (👤) → AP mode (📶) → Self clean.....
The selected symbol will flash on the display area, press the OK button to confirm.

TEMP ∨
Decreases temperature in 0.5°C (1°F) increments. Min. temperature is 16°C (60°F).

FAN SPEED
Selects fan speeds in the following order: AU → 20% → 40% → 60% → 80% → 100%.
Press the TEMP ^ or ∨ button to increase/decrease the fan speed in 1% increments.

SWING
Starts and stops the horizontal louver movement. Hold down for 2 seconds to initiate vertical louver auto swing feature.



MODE
Scrolls through operation modes as follows: **AUTO** → **COOL** → **DRY** → **HEAT** → **FAN**
NOTE: HEAT mode is not supported by the cooling only appliance.

Intelligent eye function
Used to select wind flow follow people feature or wind flow away from people feature.

OK
Used to confirm the selected functions.

TIMER
Set timer to turn unit on or off

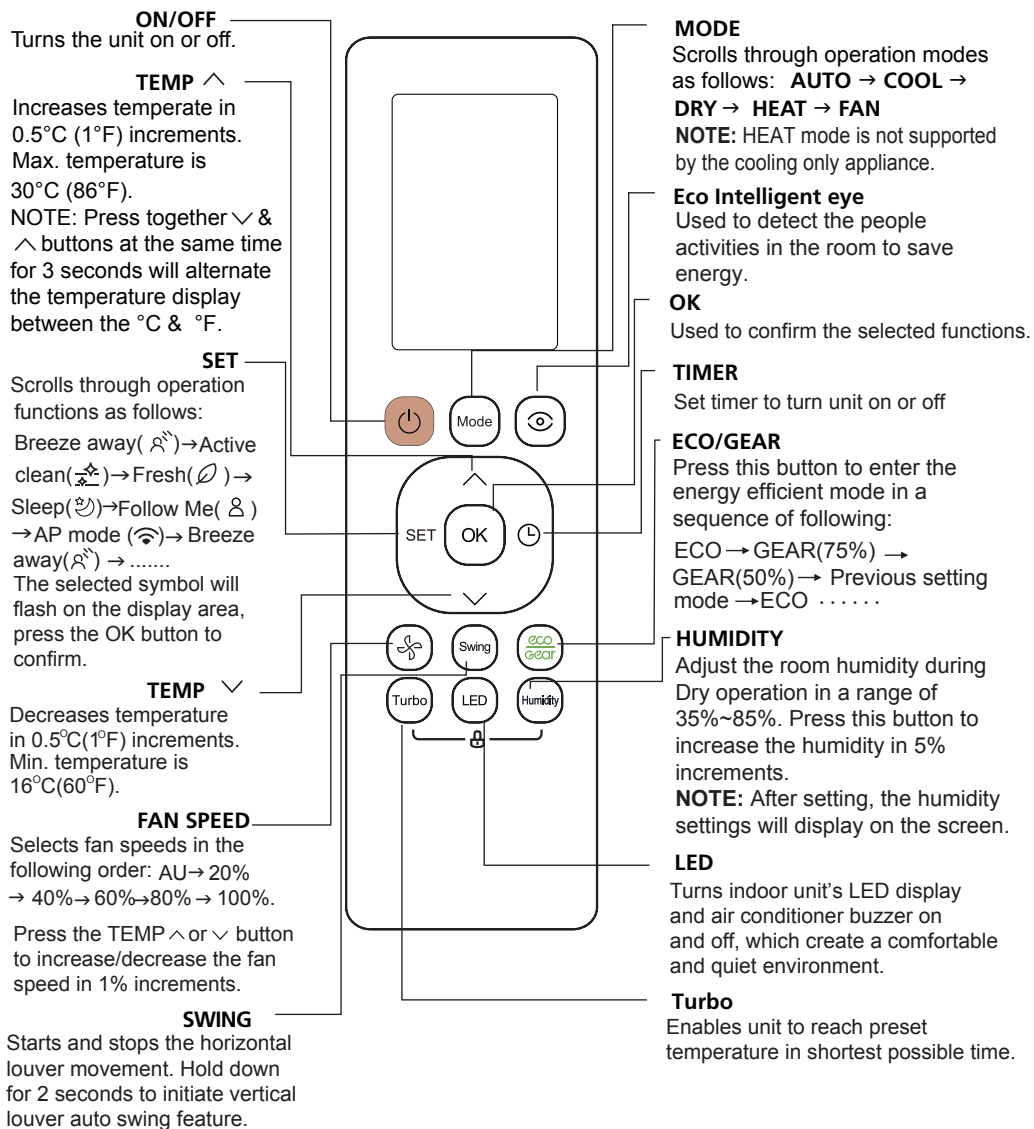
ECO/GEAR
Press this button to enter the energy efficient mode in a sequence of following:
ECO → GEAR(75%) → GEAR(50%) → Previous setting mode → ECO

HUMIDITY
Adjust the room humidity during Dry operation in a range of 35%~85%. Press this button to increase the humidity in 5% increments.
NOTE: After setting, the humidity settings will display on the screen.

LED
Turns indoor unit's LED display and air conditioner buzzer on and off, which create a comfortable and quiet environment.

Turbo
Enables unit to reach preset temperature in shortest possible time.

Model: RG10P(G2HS)/BGEF and RG10P(G2HS)/BGEFU1 (Fresh feature is not available)
RG10P1(G2HS)/BGEF, RG10P1(G2HS)/BGEFU1



Model: RG10L(D2HS)/BGEF and RG10L(D2HS)/BGEFU1(Fresh feature is not available)
 RG10L1(D2HS)/BGEF, RG10L1(D2HS)/BGEFU1
 RG10L10(D2HS)/BGEF(20-28°C/68-82°F)

Remote Screen Indicators

Information are displayed when the remote controller is power up.

- Wind flow follow people (some units)
- Breeze Away display
- Not applicable for this unit
- Not applicable for this unit
- ECO intelligent eye display (some units)
- Active clean feature display
- Fresh feature display
- Sleep mode display
- Follow me feature display
- Wireless control feature display (some units)
- Low battery detection display (If flashes)

Transmission Indicator

Lights up when remote sends signal to indoor unit

- TIMER ON display**
- TIMER OFF display**

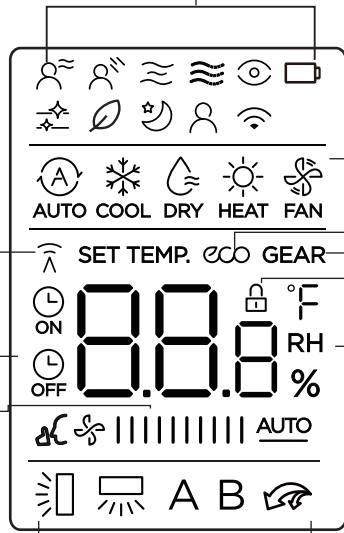
Silence feature display

FAN SPEED display

Displays selected fan speed:

- Silence 1%
- LOW 2%-20%
- MED 21%-40%
- HIGH 41%-60%
- 61%-80%
- 81%-100%
- AUTO AUTO

This fan speed can not be adjusted in AUTO or DRY mode.



MODE display
Displays the current mode, including:

ECO display
Displays when ECO feature is activated

GEAR display
Displays when GEAR feature is activated

LOCK display
Displays when LOCK feature is activated.

Temperature/Timer/Fan speed display
Displays the set temperature by default, or fan speed or timer setting when using TIMER ON/OFF functions.

Horizontal louver swing display (some units)

Vertical louver auto swing display

TURBO mode display
A Not applicable for this unit
B Not applicable for this unit

- Temperature range: 16-30°C/60-86°F (20-28°C/68-82°F) (Model dependent)
 - Timer setting range: 0-24 hours
 - Fan speed setting range: AU -100%
 - Humidity setting range: 35% -85%
- This display is blank when operating in FAN mode.

Note:

All indicators shown in the figure are for the purpose of clear presentation. But during the actual operation, only the relative function signs are shown on the display window.

How to Use Basic Functions

! ATTENTION Before operation, please ensure the unit is plugged in and power is available.

AUTO Mode

Select AUTO mode



Set your desired temperature



Turn on the air conditioner



NOTE:

1. In AUTO mode, the unit will automatically select the COOL, FAN, or HEAT function based on the set temperature.
2. In AUTO mode, fan speed can not be set.

COOL or HEAT Mode

Select COOL/HEAT mode



Set the temperature



Set the fan speed

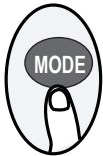


Turn on the air conditioner



DRY Mode

Select DRY mode



Set your desired temperature



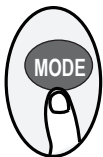
Turn on the air conditioner



NOTE: In DRY mode, fan speed can not be set since it has already been automatically controlled.

FAN Mode

Select FAN mode



Set the fan speed



Turn on the air conditioner



NOTE: In FAN mode, you can't set the temperature. As a result, no temperature displays in remote screen.

Setting the TIMER

TIMER ON/OFF - Set the amount of time after which the unit will automatically turn on/off.

TIMER ON setting

Press **TIMER** button to initiate the ON time sequence.



Press **Temp. up or down** button for multiple times to set the desired time to turn on the unit.



TIMER OFF setting

Press **TIMER** button to initiate the OFF time sequence.



Press **Temp. up or down** button for multiple times to set the desired time to turn off the unit.

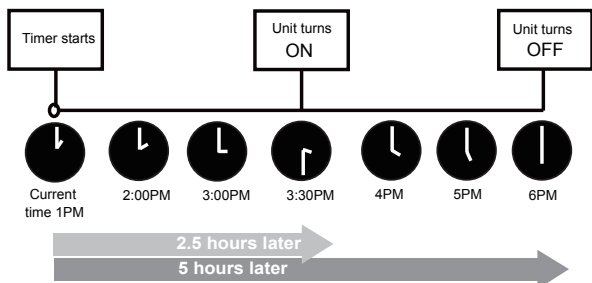
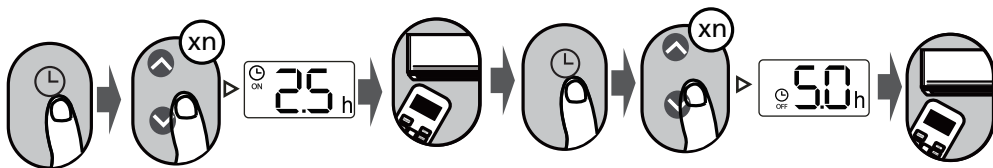


NOTE:

- When setting the **TIMER ON** or **TIMER OFF**, the time will increase by 30 minutes increments with each press, up to 10 hours. After 10 hours and up to 24, it will increase in 1 hour increments. (For example, press 5 times to get 2.5h, and press 10 times to get 5h.) The timer will revert to 0.0 after 24.
- Cancel either function by setting its timer to 0.0h.

TIMER ON & OFF setting(example)

Keep in mind that the time periods you set for both functions refer to hours after the current time.

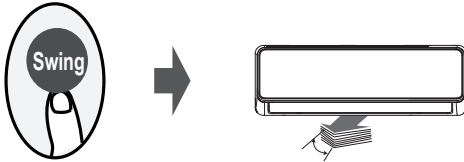


Example: If current timer is 1:00PM, to set the timer as above steps, the unit will turn on 2.5h later (3:30PM) and turn off at 6:00PM.

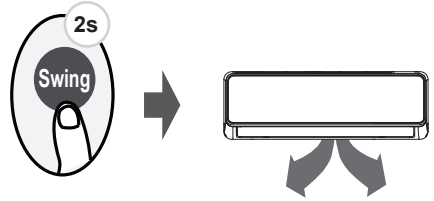
How to Use Advanced Functions

Swing function

Press Swing button

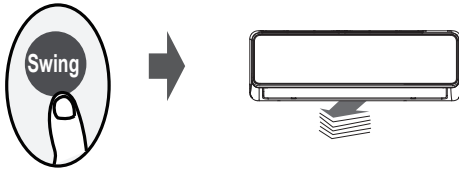


The horizontal louver will swing up and down automatically when pressing Swing button. Press again to make it stop.



Keep pressing this button more than 2 seconds, the vertical louver swing function is activated. (Model dependent)

Airflow direction



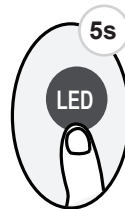
If continue to press the SWING button, five different airflow directions can be set. The louver can be move at a certain range each time you press the button. Press the button until the direction you prefer is reached(some u nits only).

LED DISPLAY



Press LED button

Press this button to turn on and turn off the display on the indoor unit.



Press this button more than 5 seconds(some units)

Keep pressing this button more than 5 seconds, the indoor unit will display the actual room temperature. Press more than 5 seconds again will revert back to display the setting temperature.

ECO/GEAR function



Press this button to enter the energy efficient mode in a sequence of following:
ECO → GEAR(75%) → GEAR(50%) → Previous setting mode → ECO.....

Note: This function is only available under COOL mode.

ECO operation:

Under cooling mode, press this button, the remote controller will adjust the temperature automatically to 24°C/75°F, fan speed of Auto to save energy (only when the set temperature is less than 24°C/75°F). If the set temperature is above 24°C/75°F, press the ECO button, the fan speed will change to Auto, the set temperature will remain unchanged.

NOTE:

Pressing the ECO button, or modifying the mode or adjusting the set temperature to less than 24°C/75°F will stop ECO operation.

Under ECO operation, the set temperature should be 24°C/75°F or above, it may result in insufficient cooling. If you feel uncomfortable, just press the ECO button again to stop it.

GEAR operation:

Press the ECO/GEAR button to enter the GEAR operation as following:

75%(up to 75% electrical energy consumption)



50%(up to 50% electrical energy consumption)



Previous setting mode.

Under GEAR operation, the display on the remote controller will alternate between electrical energy consumption and set temperature.

ECO Intelligent Eye Function(For models of RG10L series)

Press this button



Under ECO Intelligent eye mode, with the built-in infrared sensor, the unit can detect the people's activities in the room. In Cooling mode, when you are away for 30 minutes, the unit automatically lowers the frequency to save energy (for inverter models only). And the unit will automatically resume operation if sensing human activity again.

Silence function



Keep pressing Fan button for more than 2 seconds to activate/disable Silence function(some units).

Due to low frequency operation of compressor, it may result in insufficient cooling and heating capacity. Press ON/OFF, Mode, Sleep, Turbo or Clean button while operating will cancel silence function.

FP function

Press this button 2 times during one second under HEAT Mode and setting temperature of 16°C/60°F or 20°C/68°F(for models RG10L10(G2HS)/BGEF & RG10L10(D2HS)/BGEF only).

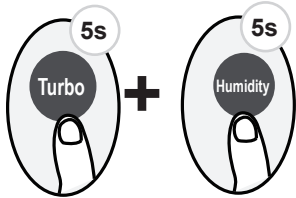


The unit will operate at high fan speed (while compressor on) with temperature automatically set to 8°C/46°F.

Note: This function is for heat pump air conditioner only.

Press this button 2 times during one second under HEAT Mode and setting temperature of 16°C/60°F or 20°C/68°F(for model RG10L10(G2HS)/BGEF& RG10L10(D2HS)/BGEF) to activate FP function.Press On/Off, Sleep, Mode, Fan and Temp. button while operating will cancel this function.

LOCK function



Press together **Turbo** button and **Humidity** button at the same time more than 5 seconds to activate Lock function. All buttons will not response except pressing these two buttons for two seconds again to disable locking.

Turbo Function

Press Turbo button



When you select Boost feature in COOL mode, the unit will blow cool air with strongest wind setting to jump-start the cooling process.

When you select Boost feature in HEAT mode, for units with Electric heat elements, the Electric HEATER will activate and jump-start the heating process.

Intelligent Eye Function(For models of RG10P series)

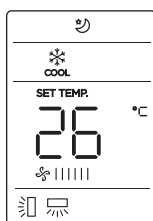
Press this button



Under Intelligent eye mode, with the built-in infrared sensor, the unit can detect the people's activities in the room. The wind can flow away from people, but also can follow people. In Cooling mode, when you are away for 30 minutes, the unit automatically lowers the frequency to save energy (for inverter models only). And the unit will automatically resume operation if sensing human activity again.

For details, please see "Intelligent Eye operation" in "Owner's Manual & Installation Manual".

SET function



- Press the SET button to enter the function setting, then press SET button or TEMP ∇ or TEMP \blacktriangle button to select the desired function. The selected symbol will flash on the display area, press the OK button to confirm.
- To cancel the selected function, just perform the same procedures as above.
- Press the SET button to scroll through operation functions as follows:
Breeze away* (R^{H}) \rightarrow Active clean/Self clean ($\text{R}^{\text{H}} \text{A}$) \rightarrow Fresh* ($\text{R}^{\text{H}} \text{F}$) \rightarrow Sleep ($\text{R}^{\text{H}} \text{S}$) \rightarrow Follow Me ($\text{R}^{\text{H}} \text{M}$) \rightarrow AP mode* ($\text{R}^{\text{H}} \text{A}$) \rightarrow Breeze away....
[*]: Model dependent

Breeze Away function (R^{H}) (some units) :

This feature avoids direct air flow blowing on the body and makes you feel indulging in silky coolness.

NTOE: This feature is available under cool, Fan and Dry mode only.

Active clean function ($\text{R}^{\text{H}} \text{A}$) (some units) :

The Active Clean Technology washes away dust, mold, and grease that may cause odors when it adheres to the heat exchanger by automatically freezing and then rapidly thawing the frost. When this function is turned on, the indoor unit display window appears "CL", after 20 to 45 minutes, the unit will turn off automatically and cancel CLEAN function.

Self clean function (some units) :

Airborne bacteria can grow in the moisture that condenses around heat exchanger in the unit. With regular use, most of this moisture is evaporated from the unit. Under Self clean operation, the unit will clean itself automatically. After cleaning, the unit will turn off automatically.

Note: You can only activate this function in COOL or DRY mode.

FRESH function() (some units) :

When the FRESH function is initiated, the Ionizer/Plasma Dust Collector (depending on models) is energized and will help to remove pollen and impurities from the air

Sleep function() :

The SLEEP function is used to decrease energy use while you sleep (and don't need the same temperature settings to stay comfortable). This function can only be activated via remote control.

For the detail, see "sleep operation" in "USER'S MANUAL"

Note: The SLEEP function is not available in FAN or DRY mode.

Follow me function() :

The FOLLOW ME function enables the remote control to measure the temperature at its current location and send this signal to the air conditioner every 3 minutes interval. When using AUTO, COOL or HEAT modes, measuring ambient temperature from the remote control (instead of from the indoor unit itself) will enable the air conditioner to optimize the temperature around you and ensure maximum comfort.

NOTE: Press and hold Turbo button for seven seconds to start/stop memory feature of Follow Me function.

- If the memory feature is activated, "On" displays for 3 seconds on the screen.
- If the memory feature is stopped, "OF" displays for 3 seconds on the screen.
- While the memory feature is activated, press the ON/OFF button, shift the mode or power failure will not cancel the Follow me function.

AP function() (some units) :

Choose AP mode to do wireless network configuration. For some units, it doesn't work by pressing the SET button. To enter the AP mode, continuously press the LED button seven times in 10 seconds.

The design and specifications are subject to change without prior notice for product improvement. Consult with the sales agency or manufacturer for details.

CR285-RG10LP(OEM)
16117000A39720
2021.05.10

技术要求:

尺寸A5,大度
80克双胶纸
装订,黑白